

National Certification Program Study Guide

July 2009



Fire Fighter I



**NFPA 1001,
Standard for Fire Fighter Professional Qualifications,
2008 Edition**

This document is provided at no cost to the user by the Kansas Fire & Rescue Training Institute, the University of Kansas, as a service to the fire fighters of Kansas

Copyright © 2008 by the Kansas Fire & Rescue Training Institute, the University of Kansas

This document is provided by the Kansas Fire & Rescue Training Institute, for use under the following provisions:

1. Duplication is permitted if the document is duplicated in its entirety, including cover, without editorial changes.
2. No other cover sheet or information is attached as part of the document.
3. Duplicated document is distributed free and is not sold as part of another publication.

This page left blank.

Introduction to Fire Fighter I Certification

Each individual seeking certification within the Kansas Fire & Rescue Training Institute, the University of Kansas, Certification System must submit an application and the appropriate fee to secure entrance into the system. **Candidates are given one year in which to complete the certification process.** Application forms may be downloaded at: <http://www.continuinged.ku.edu/fire/certification.php>.

A list of current fees may be obtained by calling 785-864-4790 or toll free 1-866-804-8841 or may be downloaded from <http://www.continuinged.ku.edu/fire/certification.php>. Purchase orders from cities or organizations will be accepted. Kansas Fire & Rescue Training Institute will not “bill” individuals for the certification fee. Checks or credit cards are accepted from individuals. Upon receipt of the application and fee, the candidate will be scheduled into a specific exam site as requested or the candidate may select an exam site from the schedule on the KUCE website.

Applicants may register for an exam site at the time of application by completing the appropriate block on the application form. Candidates requesting a specific test site should contact the Kansas Fire & Rescue Training Institute at 785-864-4790 or toll free 1-866-804-8841 to confirm that they have a reserved place at the exam.

Certification testing will be conducted over a two day period. One day will be dedicated to the written exam component and the other day will be dedicated to the practical skills exam.

Certification candidates are given two (2) attempts at each component, written and practical, **within the twelve month certification period**. If the candidate takes either component of the exam twice without passing, the candidate is required to resubmit a certification application form as well as an additional certification fee before being scheduled to retest a third time.

Candidates failing the written exam are responsible for notifying Kansas Fire & Rescue Training Institute of their desire to retest and enroll at the next scheduled exam that has available space or they may come to the Kansas Fire & Rescue Training Institute in Lawrence, Kansas to take a retest. Written exams will **not** be graded at the test site. Candidates may not take the written exam more than once per day.

Candidates are responsible for **all of the skills** required by the NFPA 1001, *Standard for Fire Fighter Professional Qualifications*, 2008 edition, during the practical exam. An exact list of specific skills is included in the study guide. A minimum of **eight** (8) skills will be selected to be tested at each exam site. **Candidates should be prepared to test on any skill listed in the standard.** The intent of this process is to insure that candidates are prepared to test on skills required by the NFPA 1001-2008 standard.

Practical skill exams are graded on a pass/fail basis. Candidates must successfully complete all skill stations at an exam site to receive a passing grade for the practical exam. Each candidate is allowed two (2) attempts at each station.

Candidates failing the practical exam are responsible for notifying Kansas Fire & Rescue Training Institute of their desire to retest by preregistering for another regularly scheduled exam. Candidates may not take the practical exam more than once per exam day.

An official picture ID (e.g., driver’s license, military ID, etc.) must be shown for admittance to written and practical exams. Bring personal protective equipment and an SCBA.

Certification Examination Instructions

Fire Fighter I

NFPA 1001 – 2008

Prerequisites:

Candidates seeking certification for Fire Fighter I within the Kansas Fire & Rescue Training Institute (KFRTI), the University of Kansas, must meet the following:

1. Residency and membership requirements as stated in Section 12, "Certification Policies" of the KFRTI National Certification Program Criteria and Procedures document published by Kansas Fire & Rescue Training Institute (available for download at <http://www.continuinged.ku.edu/fire/certification.php>.)
 2. Verification of the following requirements by Fire Chief (or designated representative) or employer. For those candidates enrolled in Kansas Community College Fire Fighter I programs, this verification will be executed by the professor or chief instructor. Verification of these requirements will be executed with the completion of the **Fire Fighter I Local Verification & Mask Fit Test Form** found at the end of this Study Guide (page 44).
 - Medical care training in infection control, bleeding control, shock management and CPR per NFPA 1001-2008, Chapter 4, paragraph 4.3.
 - Proof of mask fit testing to the SCBA mask (model & size) used in the certification test.
 - Ability to locate information in departmental SOPs.
 - Ability to complete departmental maintenance records on tools and equipment and follow reporting procedures for non-operational tools and equipment.
 3. Candidate must be competent in all objectives listed in:
 - NFPA 1001, Standard for Firefighter Professional Qualifications, Chapter 5.
 - NFPA 472, Standard for Competence of Responders to Hazardous Materials/Weapons of Mass Destruction Incidents, Awareness level (Chapter 4).
 - NFPA 472, Standard for Competence of Responders to Hazardous Materials/Weapons of Mass Destruction Incidents, Operations level (Chapter 5 and section 6.6).
 4. Successful completion of all parts of the Fire Fighter I certification exam will result in national certification in Fire Fighter I, HazMat Awareness level, and HazMat Operations level.
-

Part I - Written Examination:

The Fire Fighter I written certification exam is based on **Requisite Knowledge** objectives listed in the NFPA 1001, *Standard for Firefighter Professional Qualifications*, 2008 edition and NFPA 472, *Standard for Competence of Responders to Hazardous Materials/Weapons of Mass Destruction Incidents*, 2008 edition (Awareness and Operations levels.)

1. Candidates are required to score a minimum of 70%.
2. The certification exam contains three (3) parts:

- Part 1 contains one hundred (100) true/false and multiple choice questions covering Fire Fighter I level knowledge requirements as stated in NFPA 1001-2008. The candidate will be allowed two (2) hours to complete this portion exam.
- Part 2 contains fifty (50) true/false and multiple choice questions covering HazMat Awareness level knowledge requirements as stated in NFPA 472-2008. Information on Part 2 is found in the KF&RTI **Hazardous Materials Awareness Study Guide**. The candidate will be allowed one (1) hour to complete this portion exam.
- Part 3 contains fifty (50) true/false and multiple choice questions covering HazMat Operations level knowledge requirements as stated in NFPA 472-2008. Information on Part 3 is found in the KF&RTI **Hazardous Materials Operations Study Guide**. The candidate will be allowed one (1) hour to complete this portion exam.

3. Candidates who have previously certified at the HazMat Awareness and/or Operations level(s) may present copies of their certificates in lieu of taking Part(s) 2 and/or 3 of the certification test. These certifications must contain an IFSAC or Pro Board certification endorsement.

Part II - Practical Skills Examination:

The Fire Fighter I practical skills portion of the certification exam is based on **Requisite Knowledge** and **Requisite Skills** objectives listed in NFPA 1001, *Standard for Firefighter Professional Qualifications*, 2008 edition and NFPA 472, *Standard for Competence of Responders to Hazardous Materials/Weapons of Mass Destruction Incidents*, 2008 edition (Operations level.) There are no skills requirements associated with HazMat Awareness level.

1. **Candidates will be required to score 100% on all evaluated skills, which are graded on a Pass/Fail basis.**
2. **The skills evaluation forms are available as part of this study guide.**

References & Textbooks:

IFSTA, *Essentials of Firefighting*, 5th edition, © 2008.

NFPA 472, *Standard for Competence of Responders to Hazardous Materials/Weapons of Mass Destruction Incidents*, 2008 edition.

NFPA 1001, *Standard for Firefighter Professional Qualifications*, 2008 edition.

NFPA 1500, *Standard on Fire Department Occupational Safety and Health Program*, 2007 edition.

Required Equipment

1. Each candidate applying to certify at this level is **REQUIRED** bring the following approved, **NFPA compliant** personal protective clothing and equipment to the test site:

- Fire fighting helmet.
- Fire fighting gloves.
- Fire fighting boots (rubber or leather).
- Protective hood.
- Turnout coat.
- Protective pants with suspenders.
- Safety glasses or goggles (ANSI Standard Z87.1 compliant.)
- Self-contained breathing apparatus (SCBA). SCBA may be shared among students from the same department so long as each has been properly fit-tested to his or her mask.
- Personal Alert Safety System (PASS) Device. (It may be stand-alone or integrated into the SCBA.)

2. Candidates may **not** wear nylon or polyester clothing due to the potential of thermal injuries from fire fighting operations during the course of the test.

3. The following is **RECOMMENDED** and is left up to the applicant's discretion:

- Long sleeve cotton tee shirt.
- Long trousers.
- Outer garments suitable to the weather.
- Water or sports drinks to maintain proper hydration.
- Sun screen (if appropriate to the weather.)

Mask Fit Compliance

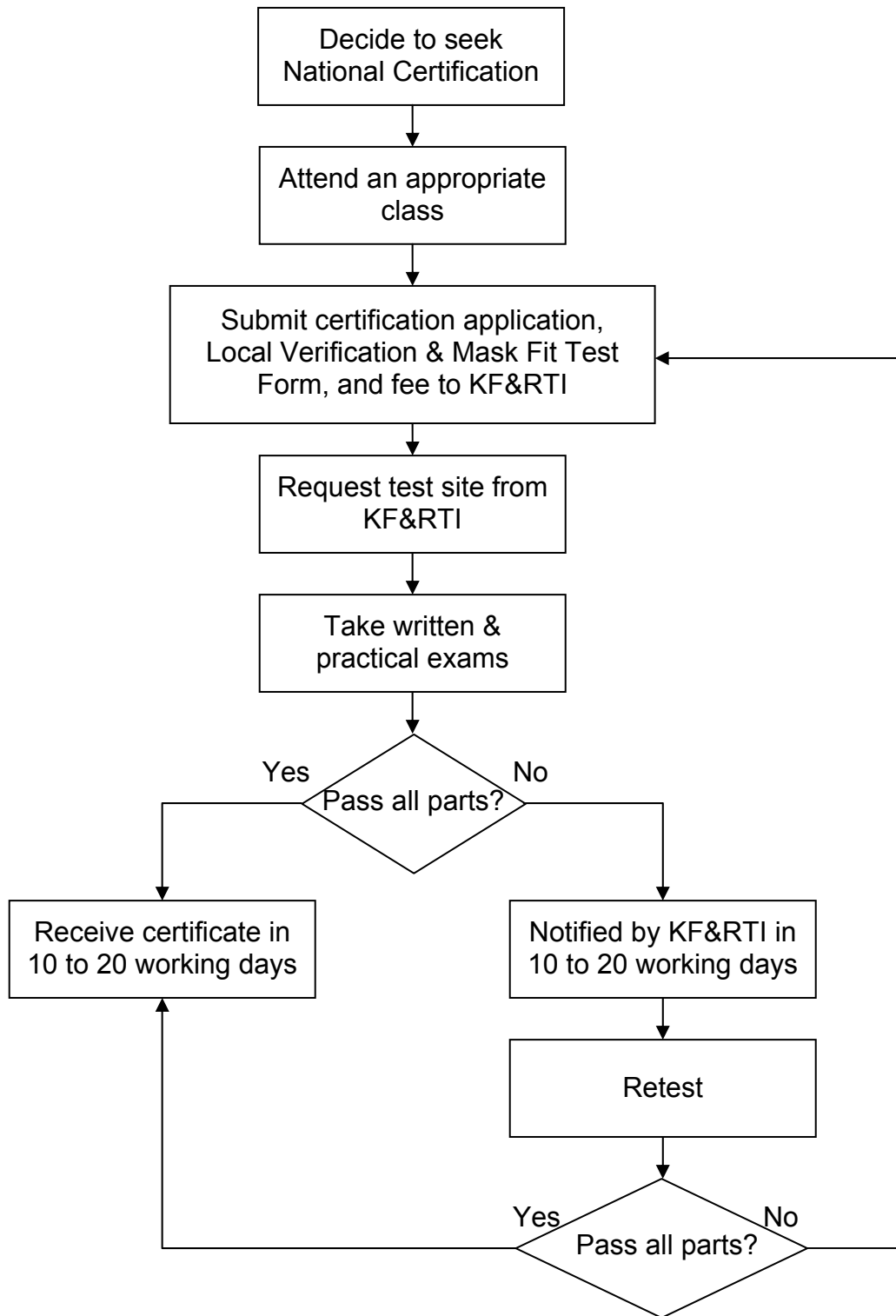
Candidates may be exposed to an IDLH environment during the course of testing.

All Fire Fighter I certification candidates must present documented SCBA face piece testing in compliance with 29 CFR 1910.134.

Verification of face piece testing may be documented on the **Fire Fighter I Local Verification & Mask Fit Test Form** provided at the end of this study guide (page 44).

Any candidates with beards or facial hair in the area of the SCBA face piece seal will not be allowed to participate in the practical skills exam for Fire Fighter I. Candidates must be visibly clean shaven, without stubble, at the time of the test.

Certification Flow Chart for Fire Fighter I



FFI Written Exam Study Guidesheet

Standard: NFPA 1001, Standard for Fire Fighter Professional Qualifications, 2008 edition.

Reference: IFSTA, *Essentials of Firefighting*, 5th edition, © 2008.

The reading and study references listed below represent published references from which certification exam questions are taken.

Section Subject & NFPA Objective Number	Reading/Study Reference
General Knowledge Requirements	
5.1.1	pp. 14 – 34, 40 – 43, 59 – 78, 167 – 180, 263 – 283
General Skill Requirements	
5.1.2	pp. 167 – 180, 200 – 205, 263 - 283
Initiate Response to an Emergency	
5.2.1	pp. 926 - 941
Receive a Phone Call	
5.2.2	p. 936
Transmit and Receive Messages	
5.2.3	pp. 943 - 949
Use Self-Contained Breathing Apparatus (SCBA)	
5.3.1	pp. 180 – 205, 207 - 212
Respond on Apparatus	
5.3.2	pp. 53 - 54
Establish & Operate Work Areas at Emergency Scenes	
5.3.3	pp. 53 – 54, 69 - 78
Force Entry Into a Structure	
5.3.4	pp. 141 – 150, 397 - 450
Exit a Hazardous Area as a Team	
5.3.5	pp. 69 – 78, 180 – 200, 207 – 212, 319 – 327
Set Up Ground Ladders	
5.3.6	pp. 471 – 507
Attack a Passenger Vehicle Fire	
5.3.7	pp. 796 – 799
Extinguish Fires in Exterior Class A Materials	
5.3.8	pp. 130 – 132, 769 – 772, 799, 912 – 914, 918
Conduct a Search and Rescue in a Structure	
5.3.9	pp. 207 – 212, 306 – 330, 490 – 494, 505 – 506

Attack an Interior Structure Fire

5.3.10 pp. 86 – 112, 130 – 132, 152 – 158, 633 – 634, 671 – 680,
718 – 733, 762 – 769, 799, 883 – 886

Perform Horizontal Ventilation on a Structure

5.3.11 pp. 86 – 130, 481 – 487, 541 – 579

Perform Vertical Ventilation on a Structure

5.3.12 pp. 112 – 132, 151 -158, 481 – 494, 498 – 505, 541 – 579

Overhaul a Fire Scene

5.3.13 pp. 882 – 886, 912 – 914, 918

Conserve Property

5.3.14 pp. 842 – 857, 867 – 882

Connect a Fire Department Pumper to a Water Supply

5.3.15 pp. 594 – 616

Extinguish Incipient Class A, Class B, and Class C Fires

5.3.16 pp. 110 – 112, 234 – 254, 780 – 787

Illuminate the Emergency Scene

5.3.17 pp. 65 – 67, 530 – 532

Turn Off Building Utilities

5.3.18 pp. 778 – 787

Combat a Ground Cover Fire

5.3.19 pp. 800 – 806

Clean and Check Ladders, Ventilation Equipment, SCBA, Ropes, Salvage Equipment, and Hand Tools

5.5.1 pp. 205 – 207, 271 – 272, 411 – 413, 479 – 481, 873 – 874

Clean, Inspect, and Return Fire Hose to Service

5.5.2 pp. 634 – 642, 653 – 663, 680 – 682

Cumulative reading pages:

14 – 34, 40 – 43, 53 – 54, 59 – 78, 86 – 132, 141 – 158, 167 – 212, 234 – 254, 263 – 283, 306 – 330,
397 – 450, 471 – 507, 530 – 532, 541 – 579, 594 – 616, 633 – 642, 653 – 663, 671 – 682, 718 – 733,
762 – 772, 780 – 787, 796 – 806, 842 – 857, 867 – 886, 912 – 914, 918, 926 - 949

FFI Practical Skills Exam Study Guidesheet

Standard: NFPA 1001, Standard for Fire Fighter Professional Qualifications, 2008 edition.

Reference: IFSTA, ***Essentials of Firefighting***, 5th edition, © 2008.

The reading and study references listed below represent published references from which certification exam questions are taken.

Section Subject & NFPA Objective Number	Reading/Study Reference		
General Knowledge Requirements			
5.1.1	None		
General Skill Requirements			
5.1.2	Don personal protective clothing	KFRTI 1	IFSTA 5-I-1 p. 214
	Doff personal protective clothing	KFRTI 1	IFSTA 5-I-2 p. 219
	Hoist tools and equipment	KFRTI 2	IFSTA 7-I-3 p. 288
			IFSTA 7-I-4 p. 289
			IFSTA 7-I-5 p. 290
			IFSTA 7-I-6 p. 291
			IFSTA 7-I-7 p. 292
			IFSTA 7-I-8 p. 292
			IFSTA 7-I-9 p. 293
			IFSTA 7-I-11 p. 294
			IFSTA 7-I-12 pp. 295 – 296
			IFSTA 7-I-13 pp. 297 – 298
			IFSTA 7-I-14 p. 299
			IFSTA 7-I-16 p. 300
	Locate information in departmental SOPs	Verified by Fire Chief	
Initiate Response to an Emergency			
5.2.1	Operate communications gear	KFRTI 3	IFSTA 19-I-1 p. 952
	Relay information	KFRTI 3	IFSTA 19-I-1 p. 952
	Record information	KFRTI 3	IFSTA 19-I-1 p. 952
Receive a Phone Call			
5.2.2	Operate telephone & intercom	KFRTI 3	IFSTA 19-I-1 p. 952
Transmit and Receive Messages			
5.2.3	Operate radio equipment	KFRTI 4	IFSTA 19-I-2 p. 953
	Discriminate between routine & emergency traffic	KFRTI 4	IFSTA 19-I-2 pp. 953 – 954
Use Self-Contained Breathing Apparatus (SCBA)			
5.3.1	Control breathing	KFRTI 5	IFSTA 5-I-7 p. 226
	Replace SCBA cylinders	KFRTI 6	IFSTA 5-I-9 p. 228
			IFSTA 5-I-10 p. 229
	Exit through restricted passage	KFRTI 5	IFSTA 5-I-8 p. 227
	SCBA emergency procedures	KFRTI 5	IFSTA 5-I-7 p. 226
	Don SCBA	KFRTI 7	IFSTA 5-I-1 p. 215 – 217

			IFSTA 10-I-7	pp. 519 – 520
			IFSTA 10-I-8	pp. 521 – 522
			IFSTA 10-I-9	pp. 523 – 524
Place ladder to avoid hazards	KFRTI 12		IFSTA 10-I-11	p. 527
			IFSTA 10-I-12	pp. 528 – 529
			IFSTA 10-I-13	p. 530
			IFSTA 10-I-11	p. 527
Attack a Passenger Vehicle Fire				
5.3.7	Identify automobile fuel types	KFRTI 13	N/A	
	Assess & control fuel leaks	KFRTI 13	N/A	
	Open, close, & adjust nozzle flow & pattern	KFRTI 13	IFSTA 15-I-5	p.815
	Apply water	KFRTI 13	IFSTA 15-I-5	p.815
	Advance attack lines	KFRTI 13	IFSTA 15-I-5	p.815
	Expose hidden fires	KFRTI 13	IFSTA 15-I-5	p.815
Extinguish Fires in Exterior Class A Materials				
5.3.8	Recognize hazards from material's configuration	KFRTI 14	IFSTA 15-I-6	p. 816
			IFSTA 15-I-7	p. 817
	Operate handlines or master streams	KFRTI 14	IFSTA 15-I-2	p. 810
			IFSTA 15-I-6	p. 816
			IFSTA 15-I-7	p. 817
	Break up material using hand tools & water streams	KFRTI 14	IFSTA 15-I-6	p. 816
			IFSTA 15-I-7	p. 817
	Evaluate for complete extinguishment	KFRTI 14	IFSTA 15-I-6	p. 816
			IFSTA 15-I-7	p. 817
	Operate hoselines & other water application devices	KFRTI 14	IFSTA 15-I-2	p. 810
			IFSTA 15-I-6	p. 816
			IFSTA 15-I-7	p. 817
	Evaluate & modify water application for maximum penetration	KFRTI 14	IFSTA 15-I-2	p. 810
			IFSTA 15-I-6	p. 816
			IFSTA 15-I-7	p. 817
	Search for & expose hidden fires	KFRTI 14	IFSTA 15-I-2	p. 810
			IFSTA 15-I-6	p. 816
			IFSTA 15-I-7	p. 817
	Assess patterns for origin determination	KFRTI 14	N/A	
Conduct a Search and Rescue in a Structure				
5.3.9	Use SCBA to exit through restricted passages	KFRTI 5	IFSTA 5-I-8	p. 227
	Set up & use different ladder types for rescue operations	KFRTI 15	IFSTA 10-I-15	pp. 532 – 533
			IFSTA 10-I-16	p. 534
	Rescue a firefighter with functioning SCBA	KFRTI 15	N/A	
	Rescue a firefighter with non-functioning SCBA	KFRTI 15	N/A	
	Rescue a civilian	KFRTI 15	IFSTA 8-I-3	p. 380
			IFSTA 8-I-4	p. 380
			IFSTA 8-I-5	p. 381
	Assess areas to determine tenability	KFRTI 15	IFSTA 8-I-1	pp. 377 – 378

Attack an Interior Structure Fire

5.3.10	Prevent water hammer	KFRTI 16	N/A	
	Adjust nozzle flow and pattern	KFRTI 16	IFSTA 15-I-4	pp. 812 – 814
	Apply water using direct, indirect, and combination attacks	KFRTI 16	IFSTA 15-I-4	pp. 812 – 814
	Advance hoselines	KFRTI 16	IFSTA 15-I-4	pp. 812 – 814
			IFSTA 13-I-19	p. 702
			IFSTA 13-I-20	pp. 703 – 706
			IFSTA 13-I-21	p. 707
			IFSTA 13-I-22	p. 708
	Extend hoselines	KFRTI 16	IFSTA 13-I-23	p. 709
	Replace burst sections	KFRTI 16	IFSTA 13-I-25	p. 710
	Operate a hoseline from a ladder	KFRTI 16	IFSTA 10-I-14	p. 531
			IFSTA 13-I-26	p. 711
	Couple & uncouple hose	KFRTI 18	IFSTA 13-I-4	p. 687
			IFSTA 13-I-5	p. 688
	Carry hose	KFRTI 16	IFSTA 13-I-14	p. 697
			IFSTA 13-I-17	p. 700
			IFSTA 13-I-18	p. 701
	Attack fires at, above, & below grade	KFRTI 16	IFSTA 15-I-4	pp. 812 – 814
	Locate & suppress interior wall and subfloor fires	KFRTI 16	IFSTA 17-I-11	pp. 901 – 902
			IFSTA 9-I-15	p. 467

Perform Horizontal Ventilation on a Structure

5.3.11	Transport & operate ventilation equipment & tools & ladders	KFRTI 17	IFSTA 11-I-3	pp. 586 – 587
			IFSTA 11-I-4	pp. 588 – 589
	Break window & door glass & remove Obstructions	KFRTI 17	IFSTA 9-I-10	p. 462

Perform Vertical Ventilation on a Structure

5.3.12	Transport & operate ventilation tools & equipment	KFRTI 18	IFSTA 11-I-1	pp. 582 – 583
			IFSTA 11-I-2	pp. 584 – 585
	Hoist ventilation equipment to roof	KFRTI 2	IFSTA 7-I-11	p. 294
			IFSTA 7-I-12	pp. 295 – 296
			IFSTA 7-I-13	pp. 297 – 298
			IFSTA 7-I-14	pp. 299
			IFSTA 7-I-16	p. 300
	Cut roofing & flooring materials	KFRTI 18	IFSTA 11-I-1	pp. 582 – 583
			IFSTA 11-I-2	pp. 584 – 585
			IFSTA 9-I-15	p. 467
	Sound roof for integrity	KFRTI 18	IFSTA 11-I-1	pp. 582 – 583
			IFSTA 11-I-2	pp. 584 – 585
	Clear an opening with hand tools	KFRTI 18	IFSTA 11-I-1	pp. 582 – 583
			IFSTA 11-I-2	pp. 584 – 585
	Employ ground ladders for ventilation	KFRTI 18	IFSTA 10-I-17	pp. 535 – 536
	Deploy roof ladder on pitched roof from a ground ladder	KFRTI 18	IFSTA 10-I-10	pp. 525 – 526
	Carry ventilation tools & equipment while ascending a ladder	KFRTI 18	N/A	

Overhaul a Fire Scene

5.3.13	Deploy & operate an attack line	KFRTI 19	IFSTA 15-I-4	pp. 812 – 814
	Remove flooring, ceiling, & wall components to expose void spaces	KFRTI 19	IFSTA 17-I-11	pp. 901 – 902

		KFRTI 19	IFSTA 9-I-15	p. 467
	Apply water for maximum effectiveness	KFRTI 19	IFSTA 17-I-11	pp. 901 – 902
	Expose & extinguish hidden fires	KFRTI 19	IFSTA 17-I-11	pp. 901 – 902
	Recognize & preserve obvious signs of area of origin & arson	KFRTI 19	IFSTA 18-II-1	p. 920
	Evaluate for complete extinguishment	KFRTI 19	IFSTA 17-I-11	pp. 901 – 902
Conserve Property				
5.3.14	Cluster furniture	KFRTI 20	IFSTA 17-I-3	p. 891
			IFSTA 17-I-5	p. 894
			IFSTA 17-I-7	p. 897
	Deploy covering materials	KFRTI 20	IFSTA 17-I-3	p. 891
			IFSTA 17-I-5	p. 894
			IFSTA 17-I-7	p. 897
	Roll & fold salvage covers	KFRTI 20	IFSTA 17-I-2	pp. 889 – 890
			IFSTA 17-I-4	pp. 892 – 893
			IFSTA 17-I-6	pp. 895 – 896
	Construct water chutes & catch-alls	KFRTI 20	IFSTA 17-I-8	p. 898
			IFSTA 17-I-9	p. 899
			IFSTA 17-I-10	p. 900
	Remove water	KFRTI 20	N/A	
	Cover building & roof openings	KFRTI 20	N/A	
	Remove debris & preserve evidence	KFRTI 20	IFSTA 17-I-11	pp. 901 – 902
	Stop flow of water from sprinkler head	KFRTI 21	IFSTA 16-I-2	pp. 860 – 861
	Operate sprinkler system main control valve	KFRTI 21	IFSTA 16-I-1	p. 859
Connect a Fire Department Pumper to a Water Supply				
5.3.15	Hand lay supply hose	KFRTI 22	IFSTA 13-I-17	p. 700
	Connect & place hard suction for drafting	KFRTI 22	IFSTA 12-I-3	p. 624
	Deploy portable water tanks & equipment to draft from & transfer water between them	KFRTI 22	IFSTA 12-I-4	p. 625
	Make hydrant-to-pumper connections for forward & reverse lays	KFRTI 22	IFSTA 13-I-12	p. 695
			IFSTA 13-I-13	p. 696
	Connect supply hose to a hydrant	KFRTI 22	IFSTA 12-I-2	pp. 620 – 623
	Fully open & close hydrant	KFRTI 22	IFSTA 12-I-1	pp. 618 – 619
Extinguish Incipient Class A, Class B, and Class C Fires				
5.3.16	Operate portable fire extinguishers	KFRTI 23	IFSTA 6-I-1	p. 256
			IFSTA 6-I-2	p. 257
			IFSTA 6-I-3	p. 258
	Approach fire with extinguishers	KFRTI 23	IFSTA 6-I-1	p. 256
			IFSTA 6-I-2	p. 257
			IFSTA 6-I-3	p. 258
	Select appropriate extinguisher	KFRTI 23	IFSTA 6-I-1	p. 256
			IFSTA 6-I-2	p. 257
			IFSTA 6-I-3	p. 258
	Safely carry extinguishers	KFRTI 23	IFSTA 6-I-1	p. 256
			IFSTA 6-I-2	p. 257
			IFSTA 6-I-3	p. 258
Illuminate the Emergency Scene				
5.3.17	Operate power supply & lighting equipment	KFRTI 24	IFSTA 8-I-11	p. 385
	Deploy cords & connectors		IFSTA 8-I-11	p. 385

	Reset ground-fault interrupter devices		N/A	
	Locate lights for best effect		IFSTA 8-I-11	p. 385
Turn Off Building Utilities				
5.3.18	Identify utility control devices	KFRTI 25	IFSTA 15-I-3	p. 811
	Operate control valves or switches		IFSTA 15-I-3	p. 811
	Assess for related hazards		N/A	
Combat a Ground Cover Fire				
5.3.19	Determine exposure threats	KFRTI 26	IFSTA 15-I-8	p. 818
	Protect exposures	KFRTI 26	IFSTA 15-I-8	p. 818
	Construct fire line or extinguish fire with hand tools	KFRTI 26	IFSTA 15-I-8	p. 818
	Maintain integrity of established fire lines	KFRTI 26	IFSTA 15-I-8	p. 818
	Suppress ground cover fires using water	KFRTI 26	IFSTA 15-I-8	p. 818
Clean and Check Ladders, Ventilation Equipment, SCBA, Ropes, Salvage Equipment, and Hand Tools				
5.5.1	Select correct tools	KFRTI 27	IFSTA 5-I-3	p. 221
			IFSTA 5-I-4	p. 222
			IFSTA 7-I-1	p. 286
			IFSTA 9-I-1	p. 453
			IFSTA 9-I-2	p. 454
			IFSTA 10-I-1	pp. 510 – 511
			IFSTA 17-I-1	p. 888
	Follow guidelines	KFRTI 27	IFSTA 5-I-3	p. 221
			IFSTA 5-I-4	p. 222
			IFSTA 7-I-1	p. 286
			IFSTA 9-I-1	p. 453
			IFSTA 9-I-2	p. 454
			IFSTA 10-I-1	pp. 510 – 511
			IFSTA 17-I-1	p. 888
	Complete recording & reporting procedures	Verified by Fire Chief		
Clean, Inspect, and Return Fire Hose to Service				
5.5.2	Clean different types of hose	KFRTI 28	IFSTA 13-I-1	p. 684
	Operate hose washing & drying equipment	KFRTI 28	IFSTA 13-I-1	p. 684
	Mark defective hose	KFRTI 28	IFSTA 13-I-1	
	Replace coupling gaskets	KFRTI 28	IFSTA 13-I-1	p. 684
	Roll hose	KFRTI 28	IFSTA 13-I-2	p. 685
			IFSTA 13-I-3	p. 686
	Reload hose	KFRTI 28	IFSTA 13-I-4	p. 687
			IFSTA 13-I-5	p. 688
			IFSTA 13-I-6	p. 689
			IFSTA 13-I-7	p. 690
			IFSTA 13-I-8	p. 691
			IFSTA 13-I-9	p. 692

NFPA 1001-2008 Fire Fighter I

KFRTI Skills Evaluation Item 1

Skill Set: General Skills – Donning & Doffing Personal Protective Clothing

OBJECTIVE: NFPA 1001-2008, Chapter 5, Section 5.1.2.

REFERENCE: IFSTA, *Essentials of Fire Fighting*, 5th edition, © 2008.
KNOWLEDGE: pp. 167 – 180
SKILLS: 5-I-1 (p. 214), 5-I-2 (p. 219)

Candidate Equipment Required: Full Personal Protective Clothing.

Evaluator Equipment Required: Stopwatch.

Read To Candidate

At this station, you will be required to don personal protective clothing (PPC) **within one (1) minute**. The exact sequence of donning the clothing is not graded. However, once completed, all components must be correctly worn and ready for fire fighting operations (minus SCBA). When you have completed all donning procedures, clap your hands and I will stop your time.

After I have checked your PPC, you will be instructed to doff your PPC and prepare it for reuse. Doffing your PPC **is not timed**.

To pass this station, you must **successfully complete 100% of the steps**.

1 st Attempt		2 nd Attempt		Skill Steps
P	F	P	F	
___	___	___	___	1. Donned boots, turnout pants, and suspenders. All fasteners secured.
___	___	___	___	2. Donned protective hood.
___	___	___	___	3. Donned turnout coat. All fasteners (including collar) secured.
___	___	___	___	4. Donned helmet. Chin strap secured.
___	___	___	___	5. Donned gloves.
END TIME HERE				
___	___	___	___	6. Donned PPE within one (1) minute.
___	___	___	___	7. Doffs PPE and prepares for reuse. (Not timed.)

Candidate's Name: _____

Station: P ___ F ___

Evaluator's Signature: _____

Date: _____

If the candidate FAILS this station after both attempts, provide comments on the back of this sheet and turn it in to the Exam Site Coordinator.

Skill Set: General Skills – Hoist Tools & Equipment

OBJECTIVE: NFPA 1001-2008, Chapter 5, Section 5.1.2.

REFERENCE: IFSTA, *Essentials of Fire Fighting*, 5th edition, © 2008.

KNOWLEDGE: pp. 167 – 180

SKILLS: 7-I-3 (p. 288), 7-I-4 (p. 289), 7-I-5 (p. 290), 7-I-6 (p. 291), 7-I-7 (p. 292), 7-I-8 (p. 292),
7-I-11 (p. 294), 7-I-12 (pp. 295 – 296), 7-I-13 (pp. 297 – 298), 7-I-14 (p. 299), 7-I-16 (p. 300)

Candidate Equipment Required: Full Personal Protective Clothing.

Evaluator Equipment Required: Two 50-foot lengths of ½" rope; pick head axe; pike pole; roof ladder; nozzle & one length of attack line; chain or vent saw.

Read To Candidate

At this station, you will be required prepare tools and equipment to be hoisted to the roof of a building. You may use any fire service knots of your choice that are appropriate to the tool or equipment to be hoisted. You must back up each knot with a safety knot as appropriate. After you have prepared all the tools and equipment, I will ask you to tie knots that you have not previously demonstrated. You may remove your gloves for this station.

This is not a timed event. However, you should complete this station within a reasonable fireground time.

To pass this station, you must **successfully complete 100% of the steps.**

1 st Attempt		2 nd Attempt		Skill Steps
P	F	P	F	
___	___	___	___	1. Hoist an axe. (<i>Head down, clove Hitch, 2 half hitches, tag line</i>)
___	___	___	___	2. Hoist a pike pole. (<i>Point up, clove Hitch, 2 half hitches, tag line</i>)
___	___	___	___	3. Hoist a roof ladder. (<i>Hooks up, bowline or figure-8-on-a-bight, safety knot, tag line</i>)
___	___	___	___	4. Hoist an uncharged line. (<i>Line folded over 4'-5', clove hitch, safety knot, half hitch</i>)
___	___	___	___	5. Hoist a saw. (<i>Bowline or figure-8-follow-thru, safety knot, tag line</i>)
___	___	___	___	6. Tie two ropes of equal diameter together to make a single, longer line. (<i>Figure-8-bend, 2 safety knots</i>)
<i>Tie any of the following knots not previously demonstrated:</i>				
___	___	___	___	7. Overhand safety, bowline, clove hitch, clove hitch around an object, figure-8, figure-8-on-a-bight, figure-8-follow-thru.

Candidate's Name: _____

Station: P ___ F ___

Evaluator's Signature: _____

Date: _____

If the candidate FAILS this station after both attempts, provide comments on the back of this sheet and turn it in to the Exam Site Coordinator.

Skill Set: Initiate Response to an Emergency & Receive a Phone Call

OBJECTIVE: NFPA 1001-2008, Chapter 5, Sections 5.2.1 & 5.2.2.

REFERENCE: IFSTA, *Essentials of Fire Fighting*, 5th edition, © 2008.
KNOWLEDGE: pp. 926 – 941
SKILLS: 19-I-1 (p. 952)

Candidate Equipment Required: Station uniform clothing.

Evaluator Equipment Required: Telephone, notepad, pen or pencil.

Read To Candidate

At this station, you will receive a call from a citizen that will initiate an emergency response or will deal with a routine matter. You will be required to record the information, appropriately deal with the caller, operate the communications gear, and relay the information in an appropriate manner.

This is not a timed event. However, you should complete this station within a reasonable fireground time.

To pass this station, you must **successfully complete 100% of the steps**.

1 st Attempt		2 nd Attempt		Skill Steps
P	F	P	F	
___	___	___	___	1. Answered fire department telephone.
___	___	___	___	2. Identified fire department and self.
___	___	___	___	3. Recorded type & address of incident being reported. (Emergency only)
___	___	___	___	4. Recorded address of incident. (Emergency only)
___	___	___	___	5. Requested caller's name and telephone number. (Emergency only)
___	___	___	___	6. Requested caller's name. (Non-Emergency only)
___	___	___	___	7. Notified dispatch center of incident or transferred the call to the correct person.
___	___	___	___	8. Provided dispatch with accurate data. (Emergency only)

Candidate's Name: _____

Station: P ___ F ___

Evaluator's Signature: _____

Date: _____

If the candidate FAILS this station after both attempts, provide comments on the back of this sheet and turn it in to the Exam Site Coordinator.

Skill Set: Transmit & Receive Radio Messages

OBJECTIVE: NFPA 1001-2008, Chapter 5, Section 5.2.3.

REFERENCE: IFSTA, *Essentials of Fire Fighting*, 5th edition, © 2008.
KNOWLEDGE: pp. 943 – 949
SKILLS: 19-I-2 (p. 953 – 954)

Candidate Equipment Required: Full Personal Protective Clothing.

Evaluator Equipment Required: Fire department radio.

Read To Candidate

At this station, you will be required to operate a fire department radio to receive and transmit both routine and emergency traffic. You will be required to discriminate between routine and emergency traffic and act appropriately.

This is not a timed event. However, you should complete this station within a reasonable fireground time.

To pass this station, you must **successfully complete 100% of the steps.**

1 st Attempt		2 nd Attempt		Skill Steps
P	F	P	F	

Routine Traffic

(SITUATION: Responding to radio function check)

___	___	___	___	1. Identified station or self with correct call sign.
___	___	___	___	2. Responded to incoming transmission appropriately for routine traffic.
___	___	___	___	3. Holding microphone correctly, spoke clearly, calmly and distinctly.
___	___	___	___	4. Ended transmission.
___	___	___	___	5. Correctly operated equipment (e.g., channel selector, volume knob, squelch, etc.)

Emergency Traffic

(SITUATION: Call from emergency scene to request the response of a second unit)

___	___	___	___	1. Identified station and self with correct call sign.
___	___	___	___	2. Responded to incoming transmission appropriately for emergency traffic.
___	___	___	___	3. Holding microphone correctly, spoke clearly, calmly and distinctly.
___	___	___	___	4. Ended transmission.
___	___	___	___	5. Correctly operated equipment (e.g., channel selector, volume knob, squelch, etc.)

Candidate's Name: _____

Station: P ___ F ___

Evaluator's Signature: _____

Date: _____

If the candidate FAILS this station after both attempts, provide comments on the back of this sheet and turn it in to the Exam Site Coordinator.

Skill Set: Use SCBA

OBJECTIVE: NFPA 1001-2008, Chapter 5, Section 5.3.1.

REFERENCE: IFSTA, *Essentials of Fire Fighting*, 5th edition, © 2008.

KNOWLEDGE: pp. 180 – 205, 207 – 212

SKILLS: 5-I-7 (p. 226), 5-I-8 (p. 227), 5-I-7 (p. 226)

Candidate Equipment Required: Full Personal Protective Clothing, SCBA, PASS alarm.

Evaluator Equipment Required: Restricted passage prop (16" space), portable radio, stopwatch.

Read To Candidate

This station has three parts which must be completed on a single tank of air:

- You will be required to demonstrate your ability to control your breathing while wearing SCBA for 2 minutes.
- You will exit through a restricted passage while wearing SCBA. When exiting through the restricted space, you are to do so without completely removing your SCBA backpack assembly if possible.
- You will demonstrate SCBA emergency procedures.

The first portion of this station timed event. The remaining portions of this station are not timed, but you should complete them within a reasonable fireground time. Remember that the station must be completed on a single tank of air.

To pass this station, you must **successfully complete 100% of the steps.**

1 st Attempt	2 nd Attempt	Skill Steps	
P	F	P	F

Demonstrate Controlled Breathing

___ ___ ___ ___ 1. Demonstrated controlled breathing for 2 minutes.

Exit Through a Restricted Passage

___ ___ ___ ___ 2. Conserved air correctly by using recognized emergency techniques (i.e., skip breathing, etc.)

___ ___ ___ ___ 3. Attempted passage by first loosening SCBA pack straps. If required to remove SCBA pack, never lost positive contact with the pack.

___ ___ ___ ___ 4. Mask seal was never compromised in restricted space.

Demonstrate SCBA Emergency Procedures

(To simulate an SCBA emergency, the evaluator will tell the candidate to close the cylinder valve.)

___ ___ ___ ___ 5. Recognized the low air audible alarm.

___ ___ ___ ___ 6. Activated PASS alarm alert signal.

(The evaluator will tell the candidate to open the cylinder valve, but continue with emergency procedures.)

___ ___ ___ ___ 7. Called a MAYDAY on radio.

Candidate's Name: _____

Station: P ___ F ___

Evaluator's Signature: _____

Date: _____

If the candidate FAILS this station after both attempts, provide comments on the back of this sheet and turn it in to the Exam Site Coordinator.

Skill Set: Replace SCBA Cylinders

OBJECTIVE: NFPA 1001-2008, Chapter 5, Section 5.1.2.

REFERENCE: IFSTA, *Essentials of Fire Fighting*, 5th edition, © 2008.

KNOWLEDGE: pp. 180 – 205, 207 – 212

SKILLS: 5-I-5 (pp. 223 – 224), 5-I-6 (p. 225), 5-I-9 (p. 228), 5-I-10 (p. 229)

Candidate Equipment Required: Full Personal Protective Clothing, SCBA.

Evaluator Equipment Required: Spare SCBA cylinder of same capacity as candidate's cylinder.

Read To Candidate

At this station, you will be required to refill and replace SCBA cylinders. You will safely remove an empty cylinder from the SCBA and replace it with a full cylinder. You will then refill the empty cylinder.

This is not a timed event. However, you should complete this station within a reasonable fireground time.

To pass this station, you must **successfully complete 100% of the steps.**

1 st Attempt		2 nd Attempt		Skill Steps
P	F	P	F	
___	___	___	___	1. Closed main line valve & bled pressure from unit before disconnecting cylinder.
___	___	___	___	2. Removed empty cylinder & replaced it with a full cylinder.
___	___	___	___	3. Checked cylinder valve opening & high pressure hose for debris.
___	___	___	___	4. Confirmed "O" ring was in place before connecting the cylinder.
___	___	___	___	5. Opened cylinder valve, verified pressure, and checked for leaks.
___	___	___	___	6. Closed cylinder valve and bled off air.
___	___	___	___	7. Turned off the PASS alarm (if integrated into SCBA.)

Candidate's Name: _____

Station: P ___ F ___

Evaluator's Signature: _____

Date: _____

If the candidate FAILS this station after both attempts, provide comments on the back of this sheet and turn it in to the Exam Site Coordinator.

Skill Set: Donning SCBA

OBJECTIVE: NFPA 1001-2008, Chapter 5, Section 5.3.1.

REFERENCE: IFSTA, *Essentials of Fire Fighting*, 5th edition, © 2008.

KNOWLEDGE: pp. 180 – 205, 207 – 212

SKILLS: 5-I-1 (pp. 215 – 217), 5-I-2 (p. 218)

Candidate Equipment Required: Full Personal Protective Clothing, SCBA, PASS alarm.

Evaluator Equipment Required: Stopwatch.

Read To Candidate

At this station, you will be required to don Self-Contained Breathing Apparatus (SCBA) **within one (1) minute**. The method and exact sequence of donning the SCBA is not graded. When you have completed all donning procedures, clap your hands and I will stop your time.

Once you have clapped your hands indicating you are done, do not touch your gear until I have checked it.

You will start this station wearing your helmet (with loosened chinstrap) but not your gloves. However, once completed, the SCBA must be correctly worn and you should be ready for interior fire fighting operations.

To pass this station, you must **successfully complete 100% of the steps**.

1 st Attempt		2 nd Attempt		Skill Steps
P	F	P	F	
___	___	___	___	1. Placed SCBA on back, fastening & tightening all straps.
___	___	___	___	2. Donned and adjusted facepiece.
___	___	___	___	3. Pulled hood over facepiece straps.
___	___	___	___	4. Replaced helmet & fastened chinstrap such that airline is not caught under chinstrap.
___	___	___	___	5. Regulator correctly mounted to facepiece and locked in.
___	___	___	___	6. Turned cylinder valve on to within one quarter (1/4) turn of fully open.
___	___	___	___	7. Mainline valve (if applicable) turned on and bypass valve closed.
___	___	___	___	8. Donned fire fighting gloves.
___	___	___	___	9. SCBA donned within one (1) minute.

Candidate's Name: _____

Station: P ___ F ___

Evaluator's Signature: _____

Date: _____

If the candidate FAILS this station after both attempts, provide comments on the back of this sheet and turn it in to the Exam Site Coordinator.

Skill Set: Respond on Apparatus

OBJECTIVE: NFPA 1001-2008, Chapter 5, Section 5.3.2.

REFERENCE: IFSTA, *Essentials of Fire Fighting* 5th edition, © 2008.

KNOWLEDGE: pp. 53 – 54

SKILLS: 2-I-1 (p. 80)

Candidate Equipment Required: Full Personal Protective Clothing.

Evaluator Equipment Required: Apparatus.

Read To Candidate

At this station, you will be required to safely mount this apparatus, assume a seated position in the rear portion of the cab, and prepare to depart, simulating an emergency response as a member of the apparatus' crew. When you are completely prepared to depart the station on the simulated emergency run, tell me so that I may check you. Once I have completed checking you, you will be required to safely dismount the apparatus as if you had arrived on-scene.

This is not a timed event. However, you should complete this station within a reasonable fireground time.

To pass this station, you must **successfully complete 100% of the steps.**

1 st Attempt		2 nd Attempt		Skill Steps
P	F	P	F	
___	___	___	___	1. Safely mounted the apparatus, using available hand-holds and steps.
___	___	___	___	2. Assumed seated position and buckled in.
___	___	___	___	3. Donned intercom headset or hearing protection if provided.
___	___	___	___	4. Checked for on-coming traffic before dismounting.
___	___	___	___	5. Safely dismounted the apparatus, using available hand-holds and steps.

Candidate's Name: _____

Station: P ___ F ___

Evaluator's Signature: _____

Date: _____

If the candidate FAILS this station after both attempts, provide comments on the back of this sheet and turn it in to the Exam Site Coordinator.

Skill Set: Establish & Operate Work Areas at Emergency Scenes

OBJECTIVE: NFPA 1001-2008, Chapter 5, Section 5.3.3.

REFERENCE: IFSTA, *Essentials of Fire Fighting*, 5th edition, © 2008.
KNOWLEDGE: pp. 53 – 54, 69 – 78
SKILLS: 2-I-2 (p. 81)

Candidate Equipment Required: Full Personal Protective Clothing.

Evaluator Equipment Required: Apparatus, Traffic Cones, Reflective Traffic Vest.

Read To Candidate

At this station, you will be required to respond on this apparatus as a member of its crew to the simulated scene of a motor vehicle accident. Upon arrival, you will dismount the apparatus and set out traffic control devices to establish a safe work area in which to conduct vehicle extrication operations, and then prepare to participate in those operations.

I will act in the role of your company officer.

This is not a timed event. However, you should complete this station within a reasonable fireground time.

To pass this station, you must **successfully complete 100% of the steps**.

1 st Attempt		2 nd Attempt		Skill Steps
P	F	P	F	
___	___	___	___	1. Donned complete personal protective clothing.
___	___	___	___	2. Donned Reflective Traffic Vest.
___	___	___	___	3. Checked for on-coming traffic, then safely dismounted the apparatus.
___	___	___	___	4. Deployed traffic control devices appropriately.
___	___	___	___	5. Reported to company officer for further assignment.

Candidate's Name: _____

Station: P ___ F ___

Evaluator's Signature: _____

Date: _____

If the candidate FAILS this station after both attempts, provide comments on the back of this sheet and turn it in to the Exam Site Coordinator.

Skill Set: Force Entry Into Structure

OBJECTIVE: NFPA 1001-2008, Chapter 5, Section 5.3.4.

REFERENCE: IFSTA, *Essentials of Fire Fighting*, 5th edition, © 2008.

KNOWLEDGE: pp. 141 – 150, 397 – 450

SKILLS: 9-I-3 (p. 455), 9-I-4 (p. 456), 9-I-8 (p. 460), 9-I-9 (p. 460), 9-I-10 (p. 462), 9-I-11 (p. 463), 9-I-12 (p. 464), 9-I-13 (p. 465), 9-I-14 (p. 466)

Candidate Equipment Required: Full Personal Protective Clothing (Including Safety Glasses or Goggles.)

Evaluator Equipment Required: Door/Window/Wall Breach Prop, Rotary Saw, Chain Saw, Axe, Pike Pole, Halligan Bar, Bolt Cutters.
(Ground Tarp for Debris.)

Read To Candidate

At this station, you will be required force entry into a building, through a door, a window, or a wall. I will give you your specific assignment shortly.

You must observe all safety precautions and demonstrate proper use of tools, ensuring that the opening is in a safe condition and ready for entry when you indicate to me that you are done. Do not skip steps or assume anything about the door, window or wall.

(ONLY IF REQUIRED TO SIMULATE FORCIBLE ENTRY, READ THE FOLLOWING: To prevent actual property damage to the fire station, you will simulate this skill. Make certain to state aloud each step as you simulate the actions including applicable safety precautions, indicated proper use of tools and when the opening is in safe condition and ready for entry.)

This is not a timed event. However, you should complete this station within a reasonable fireground time.

To pass this station, you must **successfully complete 100% of the steps.**

1 st Attempt		2 nd Attempt		Skill Steps
P	F	P	F	
___	___	___	___	1. Wore complete personal protective ensemble, to include safety glasses/goggles.
___	___	___	___	2. Checked if door/window was unlocked.
___	___	___	___	3. Correctly forced door or lock. (Door only)
___	___	___	___	4. Correctly forced window lock or broke out glass. (Window only)
___	___	___	___	5. Secured door or window pane in open position.
___	___	___	___	6. Identified wall support members and successfully breached wall. (Wall only)
___	___	___	___	7. Carried forcible entry tools safely.
___	___	___	___	8. Used forcible entry tools safely.
___	___	___	___	9. Observed all applicable safety precautions.

Candidate's Name: _____

Station: P ___ F ___

Evaluator's Signature: _____

Date: _____

If the candidate FAILS this station after both attempts, provide comments on the back of this sheet and turn it in to the Exam Site Coordinator.

Skill Set: Exit a Hazardous Area as a Team

OBJECTIVE: NFPA 1001-2008, Chapter 5, Section 5.3.5.

REFERENCE: IFSTA, *Essentials of Fire Fighting*, 5th edition, © 2008.

KNOWLEDGE: pp. 69 – 78, 180 – 200, 207 – 212, 319 – 327
SKILLS: 8-I-2 (p. 379)

Candidate Equipment Required: Full Personal Protective Clothing, SCBA, PASS Alarm.

Evaluator Equipment Required: Search Rope or Fire Hose. Smoke Machine or SCBA Mask Covers.

Read To Candidate

At this station, we will simulate that you have been conducting a search of a smoke-filled, burning building and the Incident Commander has ordered all personnel out of the building. You will be required to operate as part of a team, locate your (search line) (fire hose), and make your way out.

As you make your way out, you will be required to communicate with you team mate(s) any hazard(s) you encounter as well as any possible safe haven(s) you locate in the event you cannot reach safety.

I will lead you to your starting location at which point you will go on air. **You will begin this skill station with only 1500 psi in your SCBA.** I will act as the Incident Commander and send you a simulated radio message ordering you out of the building, at which point you will begin.

This is not a timed event. However, you must complete this station prior to depleting your air supply.

To pass this station, you must **successfully complete 100% of the steps.**

1 st Attempt		2 nd Attempt		Skill Steps
P	F	P	F	
___	___	___	___	1. Acknowledged receipt of the evacuation order.
___	___	___	___	2. Operated as a team, maintaining contact throughout.
___	___	___	___	3. Remained in a crawling position throughout.
___	___	___	___	4. Located & followed search rope or fire hose out of the structure.
___	___	___	___	5. Maintained seal on mask, conserved air, exited prior to depleting air supply.
___	___	___	___	6. Evaluated area for potential hazard(s) and communicated to team.
___	___	___	___	7. Located potential safe haven(s) and communicated to team.

Candidate's Name: _____

Station: P ___ F ___

Evaluator's Signature: _____

Date: _____

If the candidate FAILS this station after both attempts, provide comments on the back of this sheet and turn it in to the Exam Site Coordinator.

Skill Set: Set Up Ground Ladders

OBJECTIVE: NFPA 1001-2008, Chapter 5, Section 5.3.6.

REFERENCE: IFSTA, *Essentials of Fire Fighting*, 5th edition, © 2008.

KNOWLEDGE: pp. 471 – 507

SKILLS: 10-I-2 (p. 511), 10-I-3 (p. 512), 10-I-4 (p. 513), 10-I-5 (p. 514), 10-I-6 (pp. 515 – 518),
10-I-7 (pp. 519 – 520), 10-I-8 (pp. 521 – 522), 10-I-9 (pp. 523 – 524), 10-I-11 (p. 527),
10-I-12 (pp. 528 – 529), 10-I-13 (p. 530)

Candidate Equipment Required: Full Personal Protective Clothing.

Evaluator Equipment Required: Ladder (Single or Extension).

Read To Candidate

At this station, you will operate (individually) (as a member of a team), demonstrating the ability to carry ladders; set and raise ladders; judge correct angle for climbing; and judge extension ladder height requirements. You will be required to assess overhead hazards, strength of structural support components, and any other existing hazards. **You must verbalize decisions you make in your head.**

You will carry the ladders from the start point to a location appropriate to the scenario I give you. The scenarios will tell you whether you are conducting a rescue from a window, laddering a roof, etc. You are required to observe all safety precautions when moving ladders. You may use an approved ladder carry technique of your choice. You may use any approved method of raising the ladder appropriate to the scenario I give you and the location of the raise.

At the end of this scenario, you will safely lower the ladder and return it to the start point.

This is not a timed event. However, you should complete this station within a reasonable fireground time.

To pass this station, you must **successfully complete 100% of the steps.**

1 st Attempt		2 nd Attempt		Skill Steps
P	F	P	F	
___	___	___	___	1. Carried the ladder correctly.
___	___	___	___	2. Checked for hazards & overhead wires & placed ladder accordingly.
___	___	___	___	3. Confirmed that wall/roof will support the ladder.
___	___	___	___	4. Raised/extended ladder safely.
___	___	___	___	5. Confirmed all ladder flies were locked & tied off halyard. (Extension ladders only)
___	___	___	___	6. Ladder set up safely, at correct climbing angle, tip location appropriate to scenario.
___	___	___	___	7. Stabilized ladder (tied off or heeled).
___	___	___	___	8. Lowered ladder safely.

Candidate's Name: _____

Station: P ___ F ___

Evaluator's Signature: _____

Date: _____

If the candidate FAILS this station after both attempts, provide comments on the back of this sheet and turn it in to the Exam Site Coordinator.

Skill Set: Attack a Passenger Vehicle Fire

OBJECTIVE: NFPA 1001-2008, Chapter 5, Section 5.3.7.

REFERENCE: IFSTA, *Essentials of Fire Fighting*, 5th edition, © 2008.

KNOWLEDGE: pp. 796 – 799

SKILLS: 15-I-5 (p. 815)

Candidate Equipment Required: Full Personal Protective Clothing, SCBA, PASS Alarm.

Evaluator Equipment Required: Car Fire Prop; Pumper; Water Source; Halligan Bar; Flat Head Axe; Pike Pole; Hose & Nozzle (Primary & Back-up.)

Read To Candidate

At this station, you will be required to extinguish or control a passenger vehicle live fire as a member of a team. You will use appropriate protective equipment, fire fighting tools, and extinguishing agents. You will be required to assess all hazards; utilize safety precautions; identify and control all fuel leaks; expose hidden fires; provide protection for team members from flash fire while advancing an attack line; applying water with maximum effectiveness; and extinguishing the fire.

This is not a timed event. However, you should complete this station within a reasonable fireground time.

To pass this station, you must **successfully complete 100% of the steps.**

1 st Attempt		2 nd Attempt		Skill Steps
P	F	P	F	
___	___	___	___	1. Identified automobile fuel type.
___	___	___	___	2. Assessed & controlled fuel leaks.
___	___	___	___	3. Operated nozzle correctly (open, close, flow, & pattern.)
___	___	___	___	4. Applied water.
___	___	___	___	5. Advanced & withdrew attack line.
___	___	___	___	6. Searched for, exposed, & extinguished hidden fires.
___	___	___	___	7. Operated effectively as a member of a team.

Candidate's Name: _____

Station: P ___ F ___

Evaluator's Signature: _____

Date: _____

If the candidate FAILS this station after both attempts, provide comments on the back of this sheet and turn it in to the Exam Site Coordinator.

Skill Set: Extinguish Fires in Exterior Class A Materials

OBJECTIVE: NFPA 1001-2008, Chapter 5, Section 5.3.8.

REFERENCE: IFSTA, *Essentials of Fire Fighting*, 5th edition, © 2008.

KNOWLEDGE: pp. 130 – 132, 769 – 772, 799, 912 – 914, 918

SKILLS: 15-I-2 (p. 810), 15-I-6 (p. 816), 15-I-7 (p. 817)

Candidate Equipment Required: Full Personal Protective Clothing, SCBA, PASS Alarm.

Evaluator Equipment Required: Class A Material; Pumper; Water Source; Hose & Nozzle (Primary & Backup).

Read To Candidate

At this station, working as a member of a team, you will extinguish (an exterior dumpster fire) (a trash bin fire) (a burning stack or pile of Class A material). You will be required to wear full personal protective clothing ensemble with SCBA, use fire fighting hand tools, and an attack line. You must approach the fire correctly and then perform necessary overhaul and extinguishment procedures. You should indicate to me any hazards associated with the particular type of fire.

This is not a timed event. However, you should complete this station within a reasonable fireground time.

To pass this station, you must **successfully complete 100% of the steps.**

1 st Attempt		2 nd Attempt		Skill Steps
P	F	P	F	
___	___	___	___	1. Recognized hazards from material's configuration.
___	___	___	___	2. Operated handline & nozzle correctly (open, close, flow, & pattern).
___	___	___	___	3. Broke up material with hand tools and water streams.
___	___	___	___	4. Evaluated & modified water application for maximum penetration.
___	___	___	___	5. Evaluated for complete extinguishment.
___	___	___	___	6. Assessed burn patterns for origin determination.

Candidate's Name: _____

Station: P ___ F ___

Evaluator's Signature: _____

Date: _____

If the candidate FAILS this station after both attempts, provide comments on the back of this sheet and turn it in to the Exam Site Coordinator.

Skill Set: Conduct a Search & Rescue in a Structure

OBJECTIVE: NFPA 1001-2008, Chapter 5, Section 5.3.9.

REFERENCE: IFSTA, *Essentials of Fire Fighting*, 5th edition, © 2008.

KNOWLEDGE: pp. 207 – 212, 306 – 330, 490 – 494, 505 – 506

SKILLS: 8-I-1 (pp. 377 – 378), 8-I-3 (p. 380), 8-I-4 (p. 380), 8-I-5 (p. 381), 10-I-15 (pp. 532 – 533), 10-I-16 (p. 534)

Candidate Equipment Required: Full Personal Protective Clothing, SCBA, PASS Alarm.

Evaluator Equipment Required: Rescue Mannequin (or Firefighter); Search Line or Hose; Safety Rope & Harness; Ladder; SCBA Mask Covers; RIT SCBA Bag.

Read To Candidate

The Candidate will be evaluated on Situation 1 or 2

SITUATION 1: At this station, you will be required to demonstrate skills for conducting a search and rescue in a vision obscured environment within a structure. Your mask will be obscured for the duration of this skills evaluation. I will lead you to the start point and then tell you to begin. **(Continue to Situation 1A or 1B)**

- **SITUATION 1A: TRAPPED CIVILIAN.** You are a member of a search team conducting a primary search, looking for a civilian reported to be in a structure involved in fire. When you enter the structure with the (search line) (charged hose) and a partner, you should select a left or right hand search. You must search all areas until you locate the victim, maintaining communication with your partner. Once you have located the victim, exit the structure with your partner, bringing the victim with you. You may use whichever victim drag you deem appropriate to the situation.
- **SITUATION 1B: DOWN FIREFIGHTER.** You are a member of a RIT Team, searching for a firefighter reported down in the structure. When you enter the structure, follow the (search line) (charged hose) with your partner, until you locate the down firefighter. You must assess the firefighter's condition and take appropriate actions. Once you have taken the appropriate actions, exit the structure with your partner, bringing the down firefighter with you. You may use whichever victim drag you deem appropriate to the situation.

SITUATION 2: At this station, you will be required to demonstrate skills for removing a (conscious) (unconscious) victim from second story window of a structure. Your mask will **NOT** be obscured for this situation. Your partner will assist in raising the ladder and will then heal the ladder. You must ascend the ladder and remove the victim to the ground. A safety line will be attached to you in the event of a fall. Once you have properly raised the ladder to the window, I will attach the safety line and you may then ascend the ladder. The victim will be handed out the window to you. You may use whichever technique you deem appropriate to remove the victim.

This is not a timed event. However, you should complete this station within a reasonable fireground time.

To pass this station, you must **successfully complete 100% of the steps.**

1 st Attempt		2 nd Attempt		Skill Steps (<i>Situation 1</i>)
P	F	P	F	
___	___	___	___	1. Crawled low during search and rescue, maintaining left or right search mode.
___	___	___	___	2. Moved and/or searched behind furniture & searched closets and crawl spaces if applicable, completely searching one area before moving onto next.
___	___	___	___	3. Communicated with partner & maintained contact.
___	___	___	___	4. Located victim.
___	___	___	___	5. Determined if firefighter's SCBA was functioning. (<i>Situation 1B Only</i>)
___	___	___	___	6. Engaged RIT SCBA to provide air, if required. (<i>Situation 1B Only</i>)
___	___	___	___	7. Removed victim from structure.
___	___	___	___	8. Down firefighter's SCBA mask seal was not compromised. (<i>Situation 1B Only</i>)

(CONTINUED)

(CONTINUED)

1 st Attempt		2 nd Attempt		Skill Steps (<i>Situation 2</i>)
P	F	P	F	
___	___	___	___	1. Correctly raised ladder for window rescue situation.
___	___	___	___	2. Ascended ladder maintaining 3 points of contact.
___	___	___	___	3. Correctly positioned the victim for descent.
___	___	___	___	4. Descended the ladder maintaining 3 points of contact.

Candidate's Name: _____

Station: P ___ F ___

Evaluator's Signature: _____

Date: _____

If the candidate FAILS this station after both attempts, provide comments on the back of this sheet and turn it in to the Exam Site Coordinator.

Skill Set: Attack an Interior Structure Fire

OBJECTIVE: NFPA 1001-2008, Chapter 5, Section 5.3.10.

REFERENCE: IFSTA, *Essentials of Fire Fighting*, 5th edition, © 2008.

KNOWLEDGE: pp. 86 – 112, 130 – 132, 152 – 158, 633 – 634, 671 – 680, 718 – 733, 762 – 769, 799, 883 – 886

SKILLS: 9-I-15 (p. 467), 10-I-14 (p. 531), 13-I-4 (p. 687), 13-I-5 (p. 688), 13-I-14 (p. 697), 13-I-17 (p. 700), 13-I-18 (p. 701), 13-I-19 (p. 702), 13-I-20 (pp. 703 – 706), 13-I-21 (p. 707), 13-I-22 (p. 708), 13-I-23 (p. 709), 13-I-25 (p. 710), 13-I-26 (p. 711), 15-I-4 (pp. 812 - 814), 17-I-11 (pp. 901 - 902)

Candidate Equipment Required: Full Personal Protective Clothing, SCBA, PASS Alarm

Evaluator Equipment Required: Live Fire Burn Facility/Trailer; Floor Prop; Wall Prop; Pumper; Water Source; Hose & Nozzle (Primary & Back-up); 2 Hose Rolls; Ladder; Hose Tool (or Rope); Hose Clamp; Axe; Thermal Imaging Camera.

Read To Candidate

At this station, you will be required to operate as a member of a team, advancing a charged hose line up a ladder; advancing a charged hose line down an interior stairway; assess and control hazards; and extinguish a class "A" interior structure fire. You will also be required to locate & suppress hidden interior wall & subfloor fires. Finally, you will individually extend a hose line and replace a burst section of hose.

This is not a timed event. However, you should complete this station within a reasonable fireground time.

To pass this station, you must **successfully complete 100% of the steps.**

1 st Attempt		2 nd Attempt		Skill Steps
P	F	P	F	
___	___	___	___	1. Operated nozzle (prevented water hammer, adjusted flow & pattern).
___	___	___	___	2. Applied water using direct, indirect, & combination attack.
___	___	___	___	3. Advanced hose lines.
___	___	___	___	4. Operated hose line from a ladder (includes leg lock)
___	___	___	___	5. Attacked fires at, above, and below grade.
___	___	___	___	6. Located interior wall or subfloor fires using Thermal Imaging Camera.
___	___	___	___	7. Exposed and suppressed hidden fires.
___	___	___	___	8. Operated as a member of a team.
___	___	___	___	9. Carried hose & extended hose line (includes coupling/uncoupling hose).
___	___	___	___	10. Replaced burst section of hose (includes coupling/uncoupling hose).

Candidate's Name: _____

Station: P ___ F ___

Evaluator's Signature: _____

Date: _____

If the candidate FAILS this station after both attempts, provide comments on the back of this sheet and turn it in to the Exam Site Coordinator.

Skill Set: Perform Horizontal Ventilation on a Structure

OBJECTIVE: NFPA 1001-2008, Chapter 5, Section 5.3.11.

REFERENCE: IFSTA, *Essentials of Fire Fighting*, 5th edition, © 2008.

KNOWLEDGE: pp. 86 – 130, 481 – 487, 541 – 579

SKILLS: 9-I-10 (p. 462), 11-I-3 (pp. 586 – 587), 11-I-4 (pp. 588 – 589)

Candidate Equipment Required: Full Personal Protective Clothing, SCBA, PASS Alarm.

Evaluator Equipment Required: Window Prop; Pumper; Water Source; Hose & Nozzle; Positive Pressure Fan; Ladder; Axe or Pike Pole.

Read To Candidate

At this station, you will be required to perform horizontal ventilation on a smoke-filled structure while operating as a member of a team. You will ventilate the structure using (positive pressure) (hydraulic) ventilation.

You will select the proper tools, break glass using approved techniques, and completely clear the window area of sharp edges. You will be required to wear the full Personal Protective Clothing ensemble, to include eye protection, if you perform the task from the exterior of the simulated structure. If you perform the task from the interior of the structure, you must wear the full Personal Protective Clothing ensemble and SCBA. After all glass is cleared, you will place and activate ventilation devices (if applicable) and clear smoke from structure.

This is not a timed event. However, you should complete this station within a reasonable fireground time.

To pass this station, you must **successfully complete 100% of the steps.**

1 st Attempt		2 nd Attempt		Skill Steps
P	F	P	F	
___	___	___	___	1. Carried ventilation equipment, tools, & ladders correctly.
___	___	___	___	2. Set up ventilation equipment & ladders correctly.
___	___	___	___	3. Operated ventilation equipment correctly (e.g., fans, hoses.)
___	___	___	___	4. Used hand tools correctly.
___	___	___	___	5. Safely broke out window/door glass correctly & completely.

Candidate's Name: _____

Station: P ___ F ___

Evaluator's Signature: _____

Date: _____

If the candidate FAILS this station after both attempts, provide comments on the back of this sheet and turn it in to the Exam Site Coordinator.

Skill Set: Perform Vertical Ventilation on a Structure

OBJECTIVE: NFPA 1001-2008, Chapter 5, Section 5.3.12.

REFERENCE: IFSTA, *Essentials of Fire Fighting*, 5th edition, © 2008.

KNOWLEDGE: pp. 112 – 132, 151 – 158, 481 – 494, 498 – 505, 541 - 579

SKILLS: 9-I-15 (p. 467), 10-I-10 (pp. 525 – 526), 10-I-17 (pp. 535 – 536), 11-I-1 (pp. 582 – 583), 11-I-2 (pp. 584 – 585)

Candidate Equipment Required: Full Personal Protective Clothing, SCBA, PASS Alarm.

Evaluator Equipment Required: Roof Prop, Ground Ladder, Roof Ladder, Ventilation Saw, Axe, Pike Pole.

Read To Candidate

At this station, you will be required to perform vertical ventilation on a (floor) (flat roof) (pitched roof).

While operating as a member of a team, you will select the proper tools and ladders and then safely carry equipment to the ventilation site. You will properly raise a ladder for roof access. (**FOR PITCHED ROOF ONLY:** You will then climb the ground ladder and set a roof ladder for use during ventilation operations.) You will safely ascend and descend the ground ladder with tools.

On the ventilation prop, you must determine the integrity of the roof and identify structural components of the target ventilation area. You will cut an adequately sized ventilation hole and remove all ventilation barriers. The ventilation cut must not compromise the structural integrity of the roof. You will safely exit the area as a team, taking all tools and equipment with you.

This is not a timed event. However, you should complete this station within a reasonable fireground time.

To pass this station, you must **successfully complete 100% of the steps.**

1 st Attempt		2 nd Attempt		Skill Steps
P	F	P	F	
___	___	___	___	1. Chose & carried appropriate tool(s) for assigned task.
___	___	___	___	2. Raised ground ladder correctly.
___	___	___	___	3. Carried and placed roof ladder correctly. (<i>Pitched Roof Only</i>)
___	___	___	___	4. Ventilation tools carried safely while ascending and descending ladder.
___	___	___	___	5. Sounded (roof) (floor) for integrity and for structural components in ventilation target area.
___	___	___	___	6. Cut opening with ventilation saw or axe and removed ventilation barriers.
___	___	___	___	7. Structural integrity was not compromised by cut.
___	___	___	___	8. Team members retreated from area safely.

Candidate's Name: _____

Station: P ___ F ___

Evaluator's Signature: _____

Date: _____

If the candidate FAILS this station after both attempts, provide comments on the back of this sheet and turn it in to the Exam Site Coordinator.

Skill Set: Overhaul a Fire Scene

OBJECTIVE: NFPA 1001-2008, Chapter 5, Section 5.3.13.

REFERENCE: IFSTA, *Essentials of Fire Fighting*, 5th edition, © 2008.

KNOWLEDGE: pp. 882 – 886, 912 – 914, 918

SKILLS: 9-I-15 (p. 467), 15-I-4 (pp. 812 – 814), 17-I-11 (pp. 901 – 902)

Candidate Equipment Required: Full Personal Protective Clothing, SCBA, PASS Alarm.

Evaluator Equipment Required: Pumper; Water Source; Hose & Nozzle; Axe; Pike Pole.

Read To Candidate

At this station, you will be required to demonstrate the overhaul of a fire scene so that all hidden fires are exposed and extinguished. Full Personal Protective Clothing ensemble, including SCBA, must be worn during this evaluation. You are responsible for recognizing and preserving areas of fire origin and/or evidence of arson. Void spaces should be exposed while maintaining structural integrity. Water must be applied for maximum effectiveness and the entire structure should be evaluated for complete extinguishment.

This is not a timed event. However, you should complete this station within a reasonable fireground time.

To pass this station, you must **successfully complete 100% of the steps**.

1 st Attempt		2 nd Attempt		Skill Steps
P	F	P	F	
___	___	___	___	1. Selected appropriate hand tools for overhaul tasks.
___	___	___	___	2. Advanced attack line to overhaul area.
___	___	___	___	3. Stood between overhaul work area and safe means of exit.
___	___	___	___	4. Exposed void spaces in floors, ceilings, & walls with hand tools, not compromising structural integrity.
___	___	___	___	5. Exposed hidden fires and applied water for maximum effectiveness.
___	___	___	___	6. Recognized and preserved obvious signs of area of origin or evidence of arson.
___	___	___	___	7. Evaluated structure for complete extinguishment.

Candidate's Name: _____

Station: P ___ F ___

Evaluator's Signature: _____

Date: _____

If the candidate FAILS this station after both attempts, provide comments on the back of this sheet and turn it in to the Exam Site Coordinator.

Skill Set: Conserve Property (Salvage)

OBJECTIVE: NFPA 1001-2008, Chapter 5, Section 5.3.14.

REFERENCE: IFSTA, *Essentials of Fire Fighting*, 5th edition, © 2008.

KNOWLEDGE: pp. 867 - 882

SKILLS: 17-I-2 (pp. 889 – 890), 17-I-3 (p. 891), 17-I-4 (pp. 892 – 893), 17-I-5 (p. 894),
17-I-6 (pp. 895 – 896), 17-I-7 (p. 897), 17-I-8 (p. 898), 17-I-9 (p. 899), 17-I-10 (p. 890),
17-I-11 (pp. 901 – 902)

Candidate Equipment Required: Full Personal Protective Clothing.

Evaluator Equipment Required: Furniture, Salvage Cover, 2 Pike Poles (8' – 12'), Roll of Plastic, Mop, Squeegee, Hammer, Lath, Nails.

Read To Candidate

At this station, you will be required to conduct salvage operations to conserve property, operating alone and as a member of a team. Full Personal Protective Clothing must be worn during this evaluation. You will deploy covering materials; remove debris; construct water chutes and catchalls; and roll or fold salvage covers as directed. Additionally, you will be responsible for recognizing and preserving areas of origin and/or evidence or arson as well as closing building openings.

This is not a timed event. However, you should complete this station within a reasonable fireground time.

To pass this station, you must **successfully complete 100% of the steps.**

1 st Attempt		2 nd Attempt		Skill Steps
P	F	P	F	
___	___	___	___	1. Arranged furnishings in a clustered fashion.
___	___	___	___	2. Deployed rolled or folded salvage cover (Evaluator selects one): <ul style="list-style-type: none">• One-firefighter spread.• Two-firefighter spread.
___	___	___	___	3. Rolled & folded salvage covers (Evaluator selects one): <ul style="list-style-type: none">• Rolled a salvage cover for a one-firefighter spread.• Folded a salvage cover for a one-firefighter spread.• Folded a salvage cover for a two-firefighter spread.
___	___	___	___	4. Constructed a water chute.
___	___	___	___	5. Constructed a catchall.
___	___	___	___	6. Covered building openings.
___	___	___	___	7. Separated & removed charred material to a safe location.
___	___	___	___	8. Recognized and preserved area of origin and/or evidence of arson.

Candidate's Name: _____

Station: P ___ F ___

Evaluator's Signature: _____

Date: _____

If the candidate FAILS this station after both attempts, provide comments on the back of this sheet and turn it in to the Exam Site Coordinator.

NFPA 1001-2008 Fire Fighter I

KFRTI Skills Evaluation Item 21

Skill Set: Conserve Property (Sprinklers)

OBJECTIVE: NFPA 1001-2008, Chapter 5, Section 5.3.14.

REFERENCE: IFSTA, *Essentials of Fire Fighting*, 5th edition, © 2008.
KNOWLEDGE: pp. 842 – 857
SKILLS: 15-I-1 (p. 859), 16-I-2 (pp. 860 – 861)

Candidate Equipment Required: Full Personal Protective Clothing.

Evaluator Equipment Required: Sprinkler Head Prop, Sprinkler System Valve Prop, Sprinkler Tongs, Sprinkler Wedges, Step Ladder.

Read To Candidate

At this station, you will be required to conduct salvage operations to conserve property, at a simulated building with an activated sprinkler system. Full Personal Protective Clothing must be worn during this evaluation. You will stop the flow of water from an activated sprinkler head. Additionally, you will close a sprinkler system control valve.

This is not a timed event. However, you should complete this station within a reasonable fireground time.

To pass this station, you must **successfully complete 100% of the steps.**

1 st Attempt		2 nd Attempt		Skill Steps
P	F	P	F	
___	___	___	___	1. Confirmed order with officer to operate valve.
___	___	___	___	2. Closed valve.
___	___	___	___	3. Installed sprinkler wedges or tongs.

Candidate's Name: _____

Station: P ___ F ___

Evaluator's Signature: _____

Date: _____

If the candidate FAILS this station after both attempts, provide comments on the back of this sheet and turn it in to the Exam Site Coordinator.

Skill Set: Connect a Fire Dept. Pumper to a Water Supply

OBJECTIVE: NFPA 1001-2008, Chapter 5, Section 5.3.15.

REFERENCE: IFSTA, *Essentials of Fire Fighting*, 5th edition, © 2008.

KNOWLEDGE: pp. 594 – 616

SKILLS: 12-I-1 (p. 618 – 619), 12-I-2 (p. 620 – 623), 12-I-3 (p. 624), 12-I-4 (p. 624), 13-I-12 (p. 695), 13-I-13 (p. 696), 13-I-17 (p. 700)

Candidate Equipment Required: Full Personal Protective Clothing.

Evaluator Equipment Required: Pumper, Two (2) Portable Water Tanks, Fire Hydrant, Hydrant Wrench, 2-1/2" (or Larger) Supply Hose, Hose Clamp, Intake Supply Hose, Hard Suction Hose, Strainer, Jet Siphon, 1-1/2" or 1-3/4" Hose, Various Adapters (Double Male, Double Female, Reducers, etc.).

Read To Candidate

The Candidate will be evaluated on either a hydrant or a static water source.

At this station, you will be required to connect a pumper to a water supply.

HYDRANT: Working by yourself, you will complete the pumper to hydrant connection for both a forward and reverse lay. Additionally, you will make the hydrant to pumper connection using a soft-sleeve intake supply hose. You must operate the hydrant safely and correctly.

STATIC WATER SOURCE: As a member of a team, you will deploy two (2) portable water tanks and equipment necessary to transfer water between them. You will connect all hose and equipment necessary to draft water from one of the tanks to the pumper. You will not need to actually move water, only to deploy the equipment and establish all connections for the driver/operator to do so.

This is not a timed event. However, you should complete this station within a reasonable fireground time.

To pass this station, you must **successfully complete 100% of the steps.**

1st Attempt **2nd Attempt**
P **F** **P** **F**

Skill Steps

Hydrant Connection:

- | | | | | |
|-----|-----|-----|-----|---|
| ___ | ___ | ___ | ___ | 1. Hand laid supply hose (forward, reverse, and soft sleeve.) |
| ___ | ___ | ___ | ___ | 2. Connected pumper to hydrant (forward & reverse lays, soft sleeve.) |
| ___ | ___ | ___ | ___ | 3. Flushed hydrant before making first connection. |
| ___ | ___ | ___ | ___ | 4. Fully opened and closed hydrant. |

Drafting from Static Water Source:

- | | | | | |
|-----|-----|-----|-----|--|
| ___ | ___ | ___ | ___ | 1. Deployed portable water tanks. |
| ___ | ___ | ___ | ___ | 2. Deployed equipment to transfer water between tanks. |
| ___ | ___ | ___ | ___ | 3. Connected hard suction (& strainer) to pumper. |

Candidate's Name: _____

Station: P ___ F ___

Evaluator's Signature: _____

Date: _____

If the candidate FAILS this station after both attempts, provide comments on the back of this sheet and turn it in to the Exam Site Coordinator.

Skill Set: Extinguish Incipient Class A, Class B, & Class C Fires

OBJECTIVE: NFPA 1001-2008, Chapter 5, Section 5.3.16.

REFERENCE: IFSTA, *Essentials of Fire Fighting*, 5th edition, © 2008.

KNOWLEDGE: pp. 110 – 112, 234 – 254, 780 - 787

SKILLS: 6-I-1 (p. 256), 6-I-2 (p. 257), 6-I-3 (p. 258)

Candidate Equipment Required: Full Personal Protective Clothing.

Evaluator Equipment Required: Class A/B/C Fire Extinguishers; Class A Combustibles & Burn Pan; Propane Simulator (for Class B & C Fires).

Read To Candidate

At this station, you will be required to completely extinguish an incipient Class "A", "B", or "C" fire. You will be responsible for selecting the correct portable extinguisher for the type and size of fire. Once you have chosen the correct extinguisher, you are responsible for activating the extinguisher, testing operation by a brief discharge of agent, approaching the fire correctly, and using proper portable extinguisher handling techniques to completely extinguish the fire.

This is not a timed event. However, you should complete this station within a reasonable fireground time.

To pass this station, you must **successfully complete 100% of the steps**.

1 st Attempt		2 nd Attempt		Skill Steps
P	F	P	F	
___	___	___	___	1. Selected appropriate extinguisher.
___	___	___	___	2. Carried the extinguisher.
___	___	___	___	3. Approached the fire with the extinguisher.
___	___	___	___	4. Operated portable extinguisher.
___	___	___	___	5. Completely extinguished fire.

Candidate's Name: _____

Station: P ___ F ___

Evaluator's Signature: _____

Date: _____

If the candidate FAILS this station after both attempts, provide comments on the back of this sheet and turn it in to the Exam Site Coordinator.

Skill Set: Illuminate the Emergency Scene

OBJECTIVE: NFPA 1001-2008, Chapter 5, Section 5.3.17.

REFERENCE: IFSTA, *Essentials of Fire Fighting*, 5th edition, © 2008.
KNOWLEDGE: pp. 65 – 67, 530 – 532
SKILLS: 8-I-11 (p. 385)

Candidate Equipment Required: Full Personal Protective Clothing.

Evaluator Equipment Required: Generator; Extra Fuel & Oil; Extension Cords; Connectors (Junction Boxes); Portable Lights.

Read To Candidate

At this station, you will be required to illuminate a simulated emergency scene. You are responsible for checking the fuel and oil in the power plant prior to starting the power plant, starting the power plant, and arranging extension cords to minimize trip hazards. You must also deploy portable lights to maximize their effectiveness over the designated area, follow all manufacturer's listed safety precautions for the generator you are using, reset ground fault interrupter devices if necessary, and properly de-energize all equipment properly when I direct you to do so.

This is not a timed event. However, you should complete this station within a reasonable fireground time.

To pass this station, you must **successfully complete 100% of the steps.**

1 st Attempt		2 nd Attempt		Skill Steps
P	F	P	F	
___	___	___	___	1. Located lights for best effect.
___	___	___	___	2. Deployed extension cords & connectors.
___	___	___	___	3. Checked generator fuel & oil levels before operation.
___	___	___	___	4. Operated generator & lights.
___	___	___	___	5. Reset ground-fault interrupter devices (if required).
___	___	___	___	6. De-energized generator & lights.

Candidate's Name: _____

Station: P ___ F ___

Evaluator's Signature: _____

Date: _____

If the candidate FAILS this station after both attempts, provide comments on the back of this sheet and turn it in to the Exam Site Coordinator.

NFPA 1001-2008 Fire Fighter I

KFRTI Skills Evaluation Item 25

Skill Set: Turn Off Building Utilities

OBJECTIVE: NFPA 1001-2008, Chapter 5, Section 5.3.17.

REFERENCE: IFSTA, *Essentials of Fire Fighting*, 5th edition, © 2008.
KNOWLEDGE: pp. 778 – 787
SKILLS: 15-I-3 (p. 811)

Candidate Equipment Required: Full Personal Protective Clothing.

Evaluator Equipment Required: Gas Meter Prop, Water Meter Prop, Electric Meter Prop, Gas Valve Wrench, Water Meter Key.

Read To Candidate

At this station, you will be required to turn off building utilities, including electricity, water, and gas utilities for the building. You must use appropriate tools and safety precautions when performing each task. You must tell me of any (simulated) hazards associated with each utility that concern you upon securing each utility and what you would do in each case.

This is not a timed event. However, you should complete this station within a reasonable fireground time.

To pass this station, you must **successfully complete 100% of the steps.**

1 st Attempt		2 nd Attempt		Skill Steps
P	F	P	F	
___	___	___	___	1. Identified utility control devices.
___	___	___	___	2. Operated control valves or switches.
___	___	___	___	3. Assessed for related hazards.

NOTE: "Pulling" the electric meter constitutes failure! Do not allow the Candidate to pull a meter!

Candidate's Name: _____

Station: P ___ F ___

Evaluator's Signature: _____

Date: _____

If the candidate FAILS this station after both attempts, provide comments on the back of this sheet and turn it in to the Exam Site Coordinator.

Skill Set: Combat a Ground Cover Fire

OBJECTIVE: NFPA 1001-2008, Chapter 5, Section 5.3.19.

REFERENCE: IFSTA, *Essentials of Fire Fighting*, 5th edition, © 2008.

KNOWLEDGE: pp. 800 – 806

SKILLS: 15-I-8 (p. 818)

Candidate Equipment Required: Full Personal Protective Clothing or Complete Wildland Fire Fighting Ensemble.

Evaluator Equipment Required: Terrain Model, Hand Tools, Pumper (or Grass Truck), Attack (or Forestry) Hose, Nozzle.

Read To Candidate

At this station, you will be given a simulated ground cover fire scenario. I will provide to you those key points that will assist you in verbalizing techniques to combat the ground cover fire. You will verbalize to me any exposure threats, how you would protect those exposures. You will describe to me the construction of a fire line and the steps necessary to maintain it. You must recognize any threats to personnel safety and explain when a retreat should be called for.

You will then verbalize and demonstrate how you would extinguish a ground cover fire using this (pumper) (grass truck).

This is not a timed event. However, you should complete this station within a reasonable fireground time.

To pass this station, you must **successfully complete 100% of the steps.**

1 st Attempt		2 nd Attempt		Skill Steps
P	F	P	F	
___	___	___	___	1. Determined the exposure threats.
___	___	___	___	2. Protected exposures.
___	___	___	___	3. Constructed a fire line or extinguished the fire with hand tools.
___	___	___	___	4. Maintained integrity of established fire lines.
___	___	___	___	5. Suppressed ground cover fire using water.

Candidate's Name: _____

Station: P ___ F ___

Evaluator's Signature: _____

Date: _____

If the candidate FAILS this station after both attempts, provide comments on the back of this sheet and turn it in to the Exam Site Coordinator.

Skill Set: Clean & Check Ladders, Ventilation Equipment, SCBA, Ropes, Salvage Equipment & Hand Tools

OBJECTIVE: NFPA 1001-2008, Chapter 5, Section 5.5.1.

REFERENCE: IFSTA, *Essentials of Fire Fighting*, 5th edition, © 2008.
KNOWLEDGE: pp. 205 – 207, 271 – 272, 411 – 413, 479 – 481, 873 - 874
SKILLS: 5-I-1 (p. 214), 5-I-2 (p. 219)

Candidate Equipment Required: Station Uniform Clothing, Gloves

Evaluator Equipment Required: Cleaning Supplies, Ladder, Ventilation Saw, Positive Pressure Fan, Smoke Ejector, SCBA, Life Safety Rope, Tarp, Hand Tools (Axe, Pike Pole, Wrenches, Hammer, etc.).

Read To Candidate

At this station, you will be required to clean and check various pieces of equipment. You have all the necessary cleaning supplies with which to accomplish your task. You must verbalize to me all the components that you are checking so that you may receive complete credit.

I will tell you what equipment you will service.

This is not a timed event. However, you should complete this station within a reasonable fireground time.

To pass this station, you must **successfully complete 100% of the steps.**

The Evaluator will select THREE items for the Candidate to service.

1st Attempt **2nd Attempt**
P **F** **P** **F**

Skill Steps

Ladders:

- | | | | | |
|-----|-----|-----|-----|---|
| ___ | ___ | ___ | ___ | 1. Checked all components for missing parts or damage. |
| ___ | ___ | ___ | ___ | 2. Checked need for lubrication of movable parts (if applicable). |
| ___ | ___ | ___ | ___ | 3. Checked for loose rungs. |
| ___ | ___ | ___ | ___ | 4. Cleaned equipment with soapy water & scrub brush if necessary. |
| ___ | ___ | ___ | ___ | 5. Checked halyard & pulleys (if applicable). |

Ventilation Equipment:

- | | | | | |
|-----|-----|-----|-----|--|
| ___ | ___ | ___ | ___ | 1. Examined ventilation equipment for damaged or missing components. |
| ___ | ___ | ___ | ___ | 2. Checked oil and gasoline supply. (Ventilation saw & PPV fan) |
| ___ | ___ | ___ | ___ | 3. Checked cord and switch. (Smoke ejectors) |
| ___ | ___ | ___ | ___ | 4. Cleaned equipment with soapy water & scrub brush if necessary. |
| ___ | ___ | ___ | ___ | 5. Checked blade. (Ventilation saw) |

Salvage Tarps:

- | | | | | |
|-----|-----|-----|-----|---|
| ___ | ___ | ___ | ___ | 1. Examined salvage cover for damage, dirt, & debris. |
| ___ | ___ | ___ | ___ | 2. Cleaned equipment with soapy water & scrub brush if necessary. |
| ___ | ___ | ___ | ___ | 3. Allowed salvage cover to air dry completely. |

(CONTINUED)

SCBA:

- ___ ___ ___ ___ 1. Verified cylinder has current hydrostatic date.
- ___ ___ ___ ___ 2. Verified cylinder was full within 10% of capacity. Replaced cylinder if not full.
- ___ ___ ___ ___ 3. Checked all components for cleanliness.
- ___ ___ ___ ___ 4. Cleaned equipment with soapy water & scrub brush if necessary.
- ___ ___ ___ ___ 5. Checked harness system for damage.
- ___ ___ ___ ___ 6. Checked face piece (including nose cup valve discs) & head harness straps.
- ___ ___ ___ ___ 7. Operated bypass valve.
- ___ ___ ___ ___ 8. Checked all connections for leaks.
- ___ ___ ___ ___ 9. Turned cylinder off, bled pressure from system, listened for low pressure alarm.
- ___ ___ ___ ___ 10. Returned all components & straps to a state of readiness.

Rope:

- ___ ___ ___ ___ 1. Examined rope surface for cuts, stains, fraying.
- ___ ___ ___ ___ 2. Examined inner components by feeling for thinness or bunching.
- ___ ___ ___ ___ 3. Cleaned rope using clear water by hand, rope washer, or front loading washer.
- ___ ___ ___ ___ 4. Allowed rope to air completely.
- ___ ___ ___ ___ 5. Returned rope to storage.

Hand Tools:

- ___ ___ ___ ___ 1. Examined handles for damage (e.g., cracks, splits, splinters, etc.)
- ___ ___ ___ ___ 2. Examined cutting or working component for damage.
- ___ ___ ___ ___ 3. Checked tool head for tightness.
- ___ ___ ___ ___ 4. Cleaned equipment with soapy water & scrub brush if necessary.

Candidate's Name: _____

Station: P ___ F ___

Evaluator's Signature: _____

Date: _____

If the candidate FAILS this station after both attempts, provide comments on the back of this sheet and turn it in to the Exam Site Coordinator.

Skill Set: Clean, Inspect, & Return Fire Hose to Service

OBJECTIVE: NFPA 1001-2008, Chapter 5, Section 5.5.2.

REFERENCE: IFSTA, *Essentials of Fire Fighting*, 5th edition, © 2008.

KNOWLEDGE: pp. 634 – 642, 653 – 663, 680 - 682

SKILLS: 13-I-1 (p. 684), 13-I-2 (p. 685), 13-I-3 (p.686), 13-I-4 (p. 687), 13-I-5 (p. 688), 13-I-6 (p. 689), 13-I-7 (p. 690), 13-I 8 (p. 691), 13-I-9 (p. 692)

Candidate Equipment Required: Full Personal Protective Clothing.

Evaluator Equipment Required: Cleaning Supplies, Attack Hose, Supply Hose, Hose Bed Prop or Truck.

Read To Candidate

At this station, you will be required to inspect, clean, and return fire hose to service, including rolling and reloading the hose. You are responsible for examining all components and movable parts for damage or conditions which would render the equipment dangerous or unusable. You will verbalize to me any such damage that you should find.

You have all the necessary cleaning supplies with which to accomplish your task.

This is not a timed event. However, you should complete this station within a reasonable fireground time.

To pass this station, you must **successfully complete 100% of the steps.**

1st Attempt	2nd Attempt
P F	P F

Skill Steps

Inspecting Hose:

- | | | | | |
|-----|-----|-----|-----|---|
| ___ | ___ | ___ | ___ | 1. Examined outer hose jacket for physical damage. |
| ___ | ___ | ___ | ___ | 2. Checked male (threaded) coupling for damage or out-of-round. |
| ___ | ___ | ___ | ___ | 3. Checked female (threaded) swivel coupling for freedom of movement. |
| ___ | ___ | ___ | ___ | 4. Checked Storz coupling for damage broken lugs. |
| ___ | ___ | ___ | ___ | 5. Checked gaskets for defects, flexibility, and presence. |
| ___ | ___ | ___ | ___ | 6. Cleaned hose with soapy water & scrub brush if necessary. |
| ___ | ___ | ___ | ___ | 7. Dried hose according to manufacturer's recommendations. |
| ___ | ___ | ___ | ___ | 8. Returned hose to service or tagged damaged hose for repair. |

Rolling Hose:

- | | | | | |
|-----|-----|-----|-----|-------------------------------|
| ___ | ___ | ___ | ___ | 9. Made a straight hose roll. |
| ___ | ___ | ___ | ___ | 10. Made a donut hose roll. |

Reloading Hose:

- | | | | | |
|-----|-----|-----|-----|---|
| ___ | ___ | ___ | ___ | 11. Reloaded an accordion hose load. |
| ___ | ___ | ___ | ___ | 12. Reloaded a horseshoe hose load. |
| ___ | ___ | ___ | ___ | 13. Reloaded a flat hose load. |
| ___ | ___ | ___ | ___ | 14. Reload a preconnected flat hose load. |

Candidate's Name: _____

Station: P ___ F ___

Evaluator's Signature: _____

Date: _____

If the candidate FAILS this station after both attempts, provide comments on the back of this sheet and turn it in to the Exam Site Coordinator.



Firefighter I Local Verification & Mask Fit Form

NFPA 1001 – 2008

Candidate's Name: _____ Date of Birth: _____

Local Verification Requirements

1. 29 CFR 1910.134, Mask Fit Documentation:

The candidate has been successfully fitted to his or her Self-Contained Breathing Apparatus (SCBA) Mask in compliance with 29 CFR 1910.134 within the last twelve (12) calendar months.

2. NFPA 1001 – 2008, JPR 4.3, Medical Training:

The candidate has successfully completed the emergency medical care performance capabilities in compliance with the objectives in NFPA 1001 – 2008, including CPR, infection control, bleeding control, and shock management. These requirements are developed and have been validated at the local level per departmental protocol. Documentation of the requirements contained below are subject to verification by KF&RTI in written form and/or a hard copy of the document(s).

3. NFPA 1001 – 2008, JPR 5.1.2, Locate Information in Departmental SOPs:

The candidate has successfully demonstrated the ability to successfully locate information in departmental SOPs/SOGs.

4. NFPA 1001 – 2008, JPR 5.5.1, Complete Recording & Reporting Procedures:

The candidate has successfully demonstrated the ability to successfully complete departmental equipment maintenance records and comply with departmental maintenance reporting procedures.

I have reviewed the candidate's file and affirm that the candidate identified above has met the requirements listed in paragraphs 1 through 4 above. All requirements have been successfully conducted and completed per local department protocol. All information listed above can be validated by a written and/or hard copy of the documents maintained by the department.

Typed or Legibly Printed Name of Fire Chief or Training Officer

Signature of Fire Chief or Training Officer

Date: _____ Department: _____

Fire Department Phone Number: (_____) _____ - _____

Mail Completed Form To: Kansas Fire & Rescue Training Institute, KU Continuing Education, 1515 St Andrews Drive, Lawrence, KS 66047

01/09 KF&RTI